

TeleMate.Net Software, Inc.
 5555 Triangle Parkway, NW
 Suite 150
 Atlanta, Georgia 30092
 Tel: 678.589.7100
 Fax: 678.589.7110

www.telemate.net

TeleMate.Net Software introduces NetSpective Version 3.2

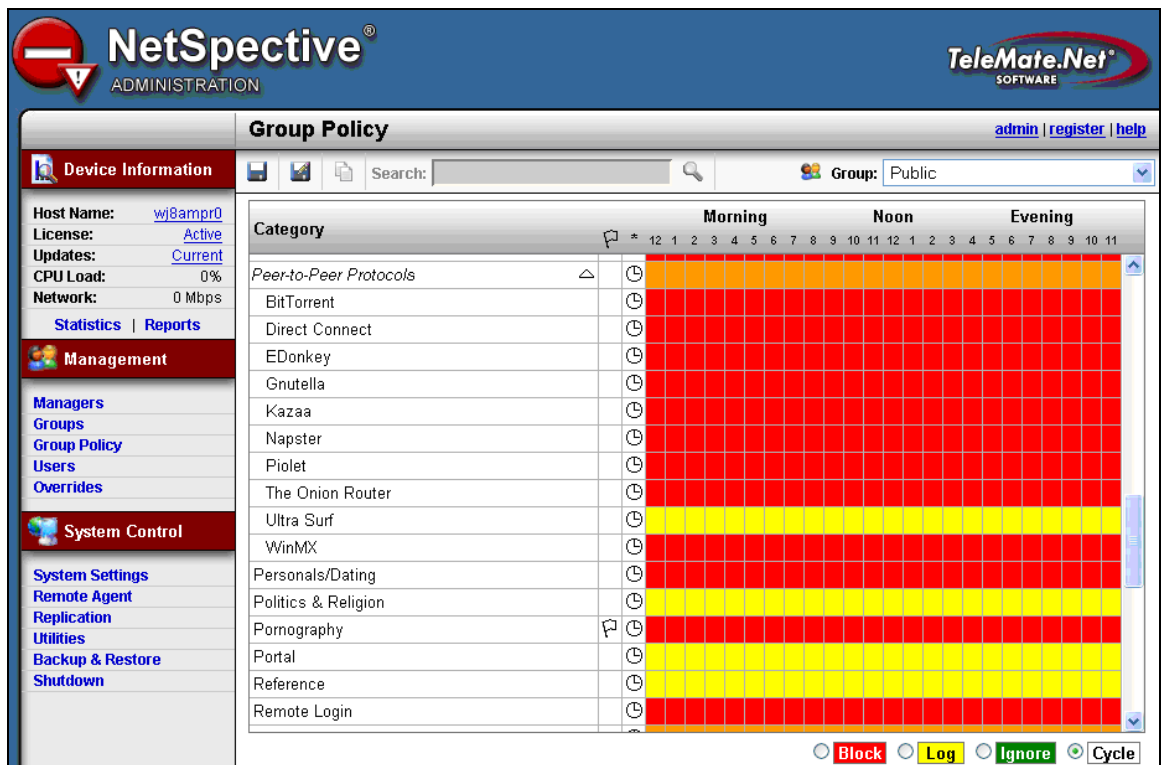
TeleMate.Net Software, Inc released NetSpective version 3.2 today. Version 3.2 will be available to customers with 2RU appliances running version 3.0 in the next 24 hours by accessing the NetSpective Device Update tab. From the Device Update screen select the 'Get Updates Now' option. Upon receipt of the update each NetSpective is designed to restart as part of the update process. In the condition that the restart fails the unit will be required to be powered down for at least 30 seconds and powered up again to complete the update process. For customers not already running Version 3.0 we recommend that you contact NetSpective's Technical Support for assistance.

The following is a brief summary of the changes pushed to your NetSpective device as part of NetSpective 3.2.

- NetSpective's new graphical user interface is the talk of the town. The updated look and feel supports all the same features and functions as in previous versions and provides the same 'easy to use' navigation that has made NetSpective widely accepted as the filtering platform of choice.

In addition version 3.2 includes better on the box reports and tighter integration with NetAuditor. The Override section of the product has also been expanded to support the ability to import and export third party lists as a tool for tailoring internet usage policies to your requirements. Now each override displays a status to keep you informed on the nature of NetSpective's Online Service review process.

Real-time email notification is available so administrators and managers can promptly respond to violations in usage policies.



NetSpective ADMINISTRATION

Group Policy

admin | register | help

Device Information: Host Name: wj8ampr0, License: Active, Updates: Current, CPU Load: 0%, Network: 0 Mbps

Category	Morning										Noon										Evening									
	1	2	3	4	5	6	7	8	9	10	1	2	3	4	5	6	7	8	9	10	1	2	3	4	5	6	7	8	9	10
Peer-to-Peer Protocols	⏸	⏸	⏸	⏸	⏸	⏸	⏸	⏸	⏸	⏸	⏸	⏸	⏸	⏸	⏸	⏸	⏸	⏸	⏸	⏸	⏸	⏸	⏸	⏸	⏸	⏸	⏸	⏸	⏸	⏸
BitTorrent	⏸	⏸	⏸	⏸	⏸	⏸	⏸	⏸	⏸	⏸	⏸	⏸	⏸	⏸	⏸	⏸	⏸	⏸	⏸	⏸	⏸	⏸	⏸	⏸	⏸	⏸	⏸	⏸	⏸	⏸
Direct Connect	⏸	⏸	⏸	⏸	⏸	⏸	⏸	⏸	⏸	⏸	⏸	⏸	⏸	⏸	⏸	⏸	⏸	⏸	⏸	⏸	⏸	⏸	⏸	⏸	⏸	⏸	⏸	⏸	⏸	⏸
EDonkey	⏸	⏸	⏸	⏸	⏸	⏸	⏸	⏸	⏸	⏸	⏸	⏸	⏸	⏸	⏸	⏸	⏸	⏸	⏸	⏸	⏸	⏸	⏸	⏸	⏸	⏸	⏸	⏸	⏸	⏸
Gnutella	⏸	⏸	⏸	⏸	⏸	⏸	⏸	⏸	⏸	⏸	⏸	⏸	⏸	⏸	⏸	⏸	⏸	⏸	⏸	⏸	⏸	⏸	⏸	⏸	⏸	⏸	⏸	⏸	⏸	⏸
Kazaa	⏸	⏸	⏸	⏸	⏸	⏸	⏸	⏸	⏸	⏸	⏸	⏸	⏸	⏸	⏸	⏸	⏸	⏸	⏸	⏸	⏸	⏸	⏸	⏸	⏸	⏸	⏸	⏸	⏸	⏸
Napster	⏸	⏸	⏸	⏸	⏸	⏸	⏸	⏸	⏸	⏸	⏸	⏸	⏸	⏸	⏸	⏸	⏸	⏸	⏸	⏸	⏸	⏸	⏸	⏸	⏸	⏸	⏸	⏸	⏸	⏸
Piolet	⏸	⏸	⏸	⏸	⏸	⏸	⏸	⏸	⏸	⏸	⏸	⏸	⏸	⏸	⏸	⏸	⏸	⏸	⏸	⏸	⏸	⏸	⏸	⏸	⏸	⏸	⏸	⏸	⏸	⏸
The Onion Router	⏸	⏸	⏸	⏸	⏸	⏸	⏸	⏸	⏸	⏸	⏸	⏸	⏸	⏸	⏸	⏸	⏸	⏸	⏸	⏸	⏸	⏸	⏸	⏸	⏸	⏸	⏸	⏸	⏸	⏸
Ultra Surf	⏸	⏸	⏸	⏸	⏸	⏸	⏸	⏸	⏸	⏸	⏸	⏸	⏸	⏸	⏸	⏸	⏸	⏸	⏸	⏸	⏸	⏸	⏸	⏸	⏸	⏸	⏸	⏸	⏸	⏸
WinMX	⏸	⏸	⏸	⏸	⏸	⏸	⏸	⏸	⏸	⏸	⏸	⏸	⏸	⏸	⏸	⏸	⏸	⏸	⏸	⏸	⏸	⏸	⏸	⏸	⏸	⏸	⏸	⏸	⏸	⏸
Personals/Dating	⏸	⏸	⏸	⏸	⏸	⏸	⏸	⏸	⏸	⏸	⏸	⏸	⏸	⏸	⏸	⏸	⏸	⏸	⏸	⏸	⏸	⏸	⏸	⏸	⏸	⏸	⏸	⏸	⏸	⏸
Politics & Religion	⏸	⏸	⏸	⏸	⏸	⏸	⏸	⏸	⏸	⏸	⏸	⏸	⏸	⏸	⏸	⏸	⏸	⏸	⏸	⏸	⏸	⏸	⏸	⏸	⏸	⏸	⏸	⏸	⏸	⏸
Pornography	⏸	⏸	⏸	⏸	⏸	⏸	⏸	⏸	⏸	⏸	⏸	⏸	⏸	⏸	⏸	⏸	⏸	⏸	⏸	⏸	⏸	⏸	⏸	⏸	⏸	⏸	⏸	⏸	⏸	⏸
Portal	⏸	⏸	⏸	⏸	⏸	⏸	⏸	⏸	⏸	⏸	⏸	⏸	⏸	⏸	⏸	⏸	⏸	⏸	⏸	⏸	⏸	⏸	⏸	⏸	⏸	⏸	⏸	⏸	⏸	⏸
Reference	⏸	⏸	⏸	⏸	⏸	⏸	⏸	⏸	⏸	⏸	⏸	⏸	⏸	⏸	⏸	⏸	⏸	⏸	⏸	⏸	⏸	⏸	⏸	⏸	⏸	⏸	⏸	⏸	⏸	⏸
Remote Login	⏸	⏸	⏸	⏸	⏸	⏸	⏸	⏸	⏸	⏸	⏸	⏸	⏸	⏸	⏸	⏸	⏸	⏸	⏸	⏸	⏸	⏸	⏸	⏸	⏸	⏸	⏸	⏸	⏸	⏸

⏸ Block ⏸ Log ⏸ Ignore ⏸ Cycle

Figure 1 – Easy to use Group Policy management

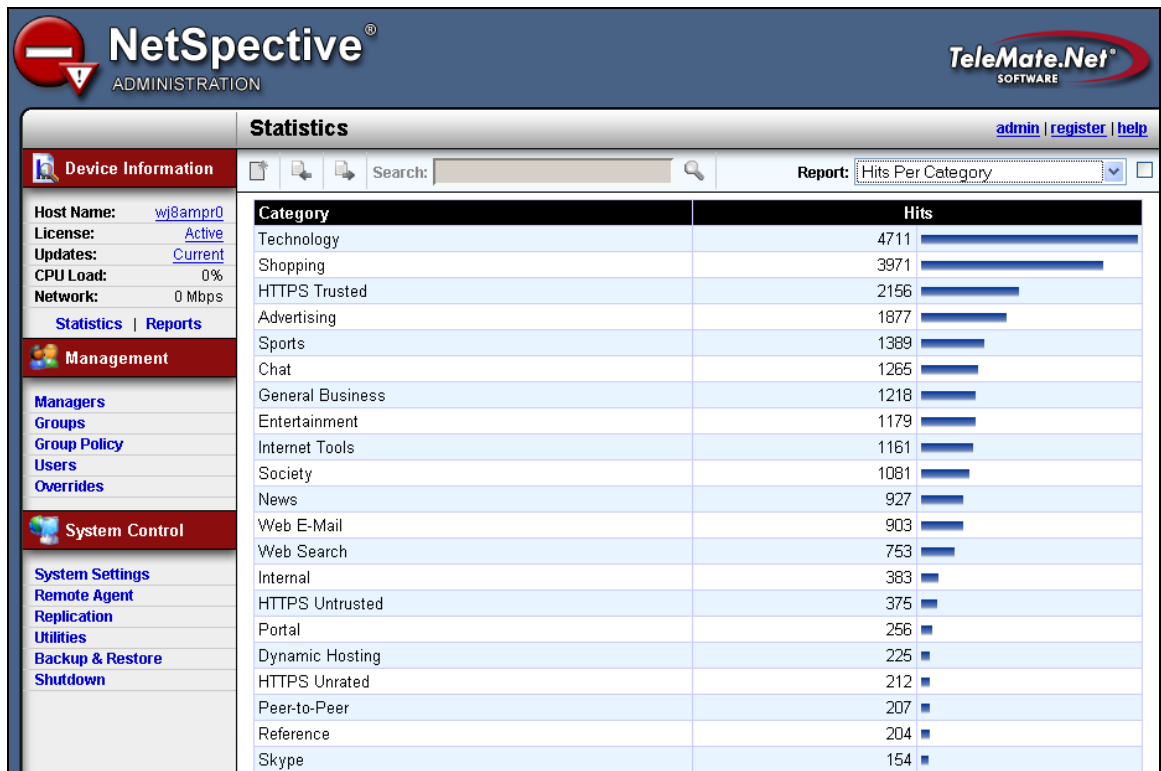


Figure 2 - Enhanced on the box reporting.

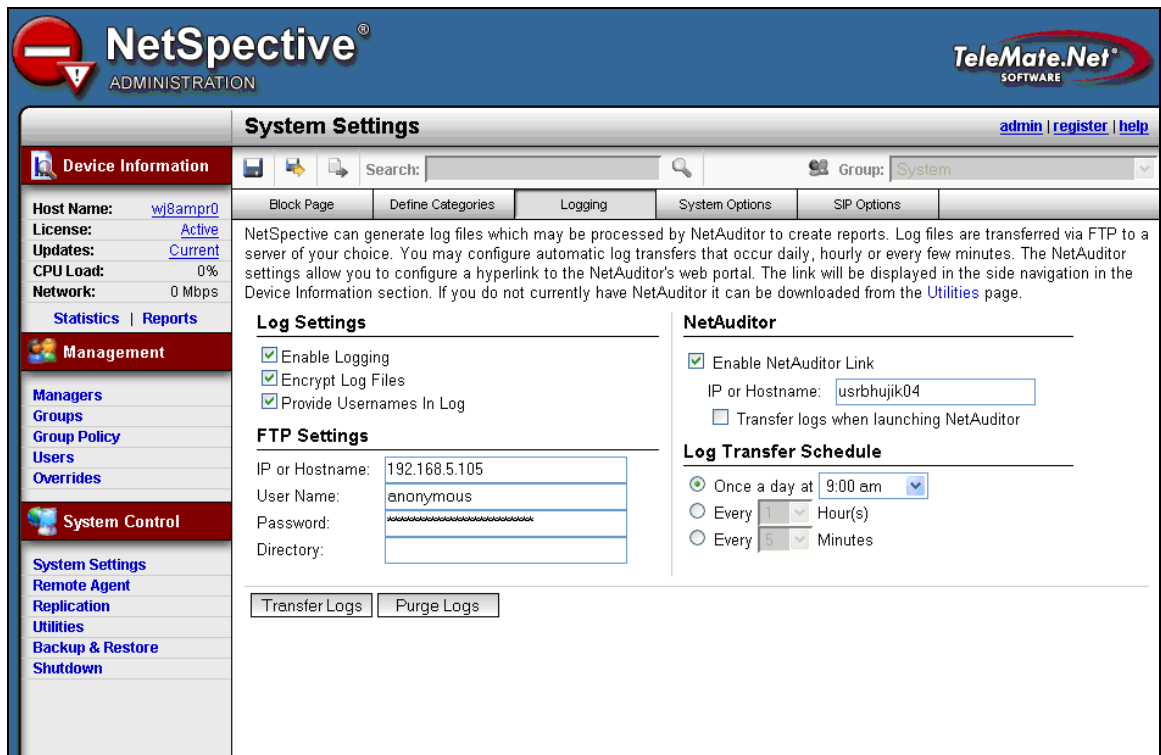


Figure 3 - Integrated link to NetAuditor for detail reporting.

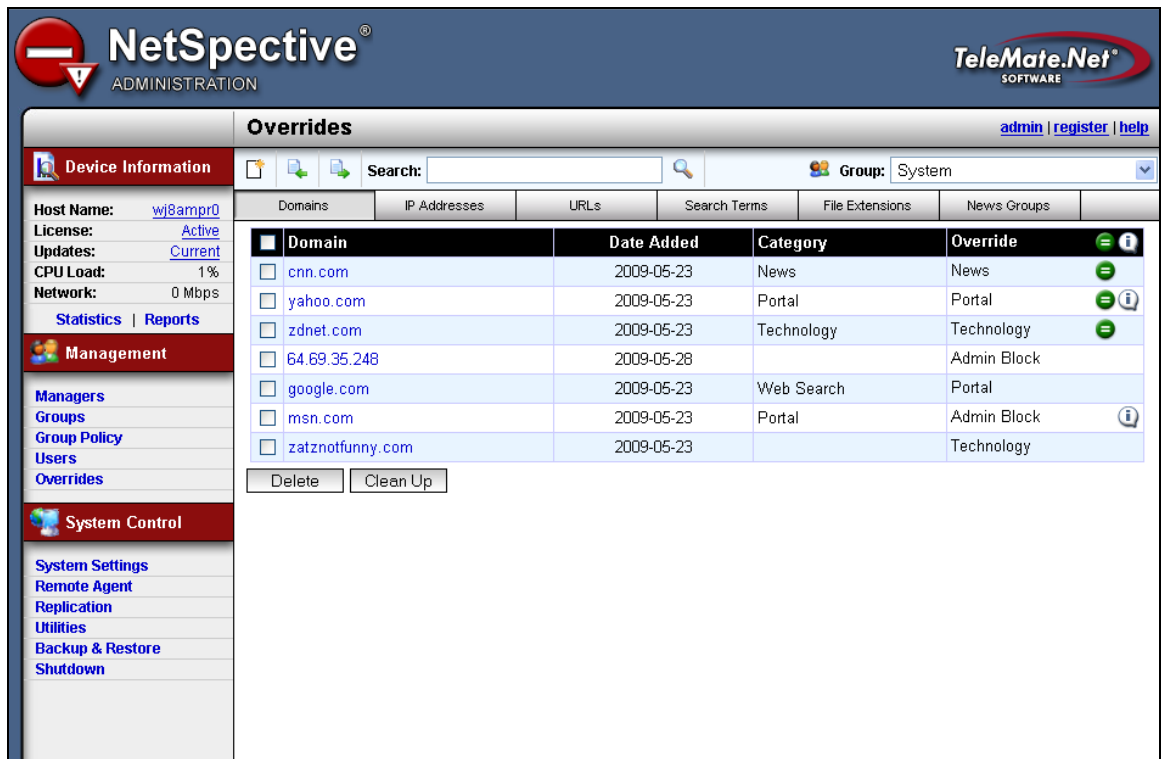


Figure 4 - Enhanced overrides with import and export functionality, NetSpective Online Service review notification with list clean up.

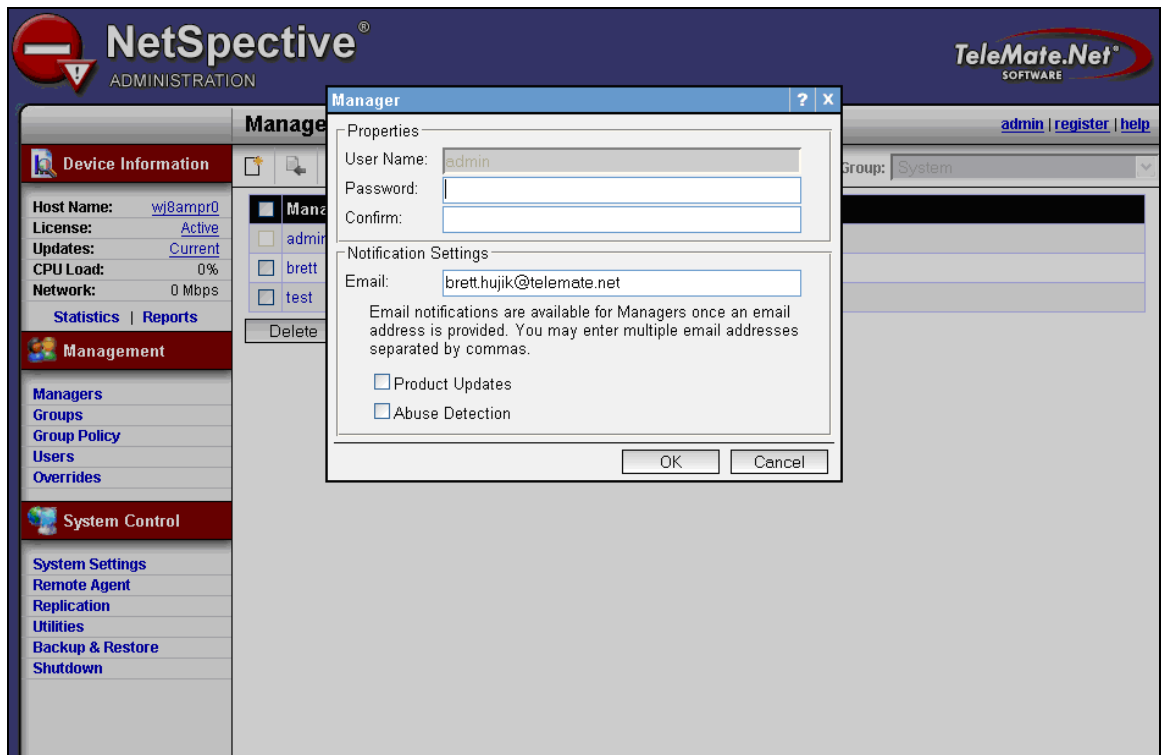


Figure 5 - Real-time network abuse email notification to managers or email groups

As a recap below is a list of previously released feature(s)

- NetSpective introduced 'Micro Update' functionality to combat the continuous rise of Anonymous Proxy Servers and objectionable content. NetSpective Micro Update, which is enabled through the 'Device Update' menu item, automatically enables multiple updates per hour without degradation of network performance.
- Added support to NetSpective™ Remote Agent for Macintosh operating systems. NetSpective now offers passive content filtering with a real-time communication link with the NetSpective remote access appliance to enforce usage policies for both Windows and Macintosh operating systems.
- Improved handling of BitTorrent and LimeWire encrypted extensions; plus VLAN tag integration.

As Telemate.Net Software continues to grow, we are pleased to announce the relocation of our corporate headquarters to:

TeleMate.Net Software Inc.
5555 Triangle Parkway
Suite 150
Atlanta, Georgia 30092 USA

In addition, important contact information has been updated and is provided below for your records.

Worldwide Sales

Phone +1.678.589.7100
Fax +1.678.589.7110
Email Worldwide.Sales@TeleMate.Net

Technical Support

Phone +1.678.589.1626
Email TeleMateSupport@TeleMate.Net
NetSpectiveSupport@TeleMate.Net
NetAuditorSupport@TeleMate.Net
Registration Services Registration@TeleMate.Net

Remittance

FEIN 58-1656726
Address TeleMate.Net Software Inc.
5555 Triangle Parkway
Suite 150
Atlanta, Georgia 30092
U.S and Canada +1.678.589.7100
Fax +1.678.589.7110
Email AccountsPayable@TeleMate.Net

If additional explanation and Technical Support please contact us at +1(678) 589-7100 or <mailto:NetSpectiveSupport@telemate.net> or by accessing our web site at <http://www.telemate.net/support>. Thank you for allowing us to serve your internet content management needs. The best is yet to come.

John O'Reilly
General Manager / President
TeleMate.Net Software Inc.